

# Craterelles Apartment, Courchevel, France



[www.investorsinproperty.com](http://www.investorsinproperty.com)

SKI PROPERTY SPECIALISTS SINCE 1986

# Craterelles Apartment

This stunning 4 bedroom top floor apartment is very well located in Courchevel 1650 near the new escalator so only 3 minutes to the centre of the resort and ski lifts. The chalet style residence is in a very sunny spot with great views.

## Essential Facts

- New chalet style apartment building just 3 minutes from the ski lifts
- 4 bedroom apartment
- Open plan living area with fireplace
- Delivery Spring 2012
- Very sunny area with great views
- Next to the new escalator just 3 minutes to the centre of the resort
- In the heart of the world-renowned Three Valleys
- 600km of marked piste, unlimited off piste terrain
- Just over an hour from Chambéry, 1hr, 30mins from Grenoble & 2hrs from Geneva



Only 2 hours from Geneva and just over an hour from Chambéry



# Resort Information

Courchevel sits in the heart of the world-renowned Three Valleys ski area offering access to 600km of marked piste, and unlimited off piste terrain.

What makes Courchevel special is that it is not one single resort; it is four resorts on different altitudes and each offers a very different image and ambience. Courchevel 1850 is the most chic, the most expensive and the most glamorous resort in France. It is a favourite of wealthy Parisians who fly directly into the Altiport and has expensive shops, fabulous hotels and restaurants. Courchevel 1650 has plenty to offer, is ski-in, ski-out and new developments here are starting to bring the area up. Courchevel 1550 is markedly quieter with just a few chalets and hotels but gives the quickest access to the skiing.

Courchevel 1300 (Le Praz) is a village at the foot of the slopes and still retains its original charm but two gondolas give fast access to 1850. Between them they offer some of the best skiing in the Trois Vallées.

## Getting there

The most convenient airport is Chambéry which is just over an hour away, but you can also fly to Grenoble (1hr 30m), Geneva (2hrs) and Lyon (2hrs 30m).



Top floor 4 bedroom apartment with great views



# Property

This brand new apartment is currently under construction on top of a small existing chalet style residence. Very well located near the new escalator connecting to the lifts and the centre of the resort, this apartment is in a very sunny spot with great views. Delivery is scheduled for Spring 2012.

This stunning top floor apartment will have 189m<sup>2</sup> of habitable space including a 1.80m high + 24m<sup>2</sup> cellar. Beautiful living area with dining, sitting room with fire place and open plan kitchen. 4 large bedrooms with 4 bathrooms en-suite. 5 toilets. Several balconies.

**Price: 1,345,000 euros**



Close to the lift and the centre of town



# Location

This stunning apartment is in the perfect location in Courchevel 1650 next to the new escalator which makes a direct connection to the centre of the resort so you can reach the ski slopes, ski lifts, shops and restaurants in just 2 or 3 minutes.

The Craterelles is located in the most sunny part of all the different levels of Courchevel.

It is also very close to the new spa and swimming pool which the commune is planning to build during the next 2 years. A new ski lift is also planned nearby which will link directly to Courchevel 1850. This is an ideal location.

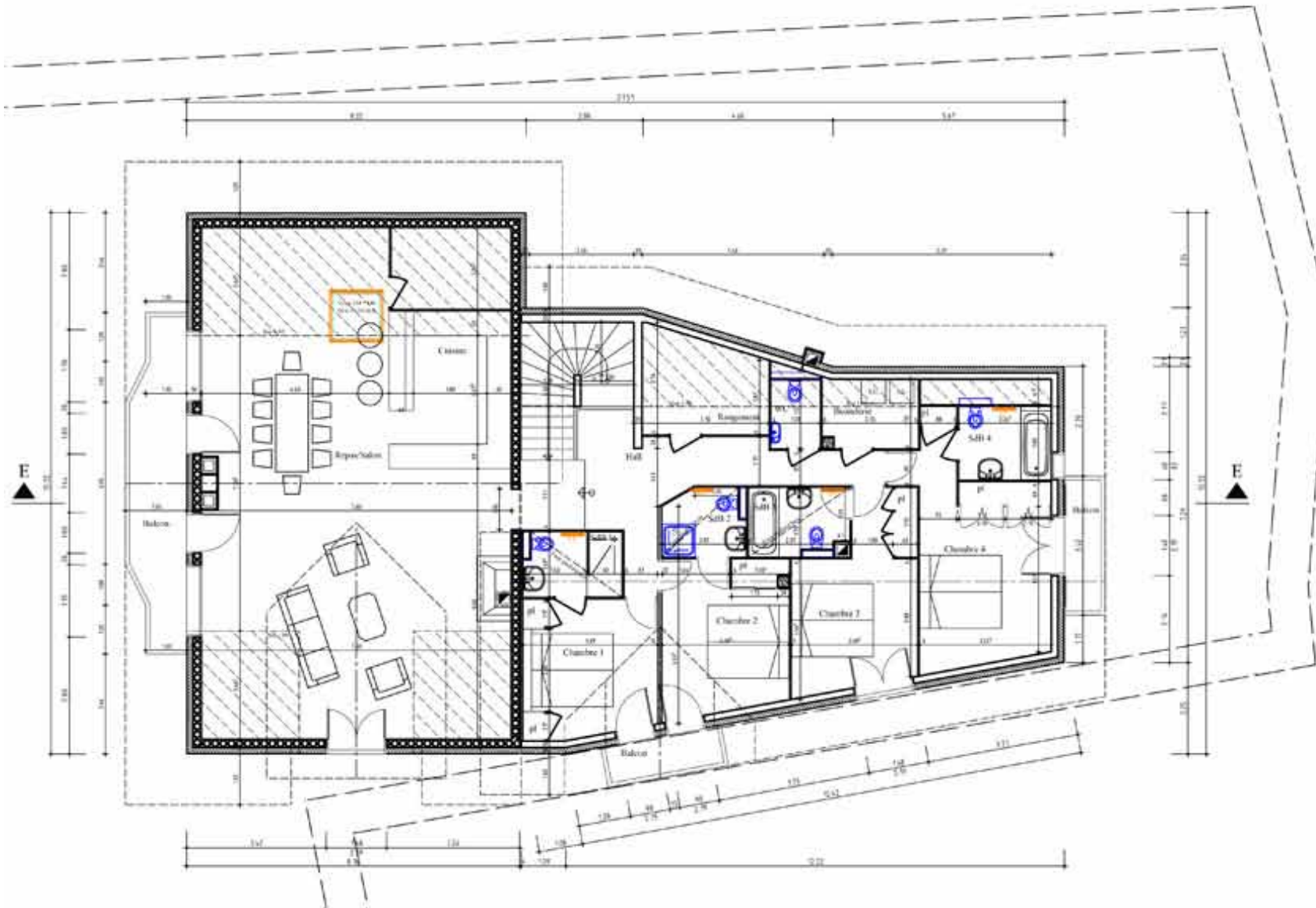


PROJET

Escalator  
centre station



# Floor plan



189m<sup>2</sup> of habitable space including a 1.80m high + 24m<sup>2</sup> cellar. Beautiful living area with dining, sitting room with fireplace and open plan kitchen. 4 large bedrooms with 4 bathrooms en-suite. 5 toilets. Several balconies.

Largest linked ski area in the world with 600km of slopes



# Winter

The local slopes provide a huge variety of pistes to suit all standards of skiers and are part of the Trois Vallées, the biggest linked ski network in the world. The entire system of 197 lifts serves a massive 600km of pistes making this a paradise for keen piste bashers. There are some testing black runs including the fearsome "couloirs", and good opportunities for guided off-piste skiing. For beginners there are nursery slopes at all levels, but most tend to go up to 1850 for tuition. The combination of Courchevel's orientation, its height, and snow cannons give Courchevel an enviable snow record.

There is plenty to do off the slopes. You could try ice karting on the specially made outdoor circuit at Les Grandes Combes if you fancy racing your friends in a karting buggy running on studded tyres. Or try ice skating at the Forum Olympic Ice Rink or watch an international ice hockey match.

For après ski and eating out there is something for everyone and every budget in the different levels of the

resort. Prices get higher as you go up starting with the excellent value of Les Peupliers in Le Praz at the bottom of the mountain, to the pricey Michelin star restaurants, Le Chabichou and Le Bateau Ivre, at the top. There are some very exclusive nightclubs and sophisticated venues such as Kalico and The Bergerie in 1850 but also some cosy local bars too.



The natural beauty of the Vanoise National Park on your doorstep



## Summer

Courchevel and the 3 Valleys have a wealth of summer activities to offer. Once the snow has melted it reveals a summer paradise in which to walk or hike, mountain bike, paraglide, rock climb or just lie back amongst the summer flowers and take in the stunning scenery. The lift system is open during the summer, making it easy to access those high mountain trails and viewpoints, or if you fancy something more daring then take a mountain guide or join one of the many organised activities.

There is a public pool in Courchevel 1550 which has two pools, one of which is partially out-doors and another indoor swimming pool in the Forum Centre in Courchevel 1850. Some of the hotels have pools and luxurious spa facilities which are also open to the public. Courchevel 1550 has a ten court tennis club with coach Nathalie Seybald on hand to impart some top tips. The Village des Poneys in Le Praz offers horse rides to suit all abilities from just 1 hour to a full day.

## Golf

Nestled at the foot of the magnificent Saulire on the shores of Lake of the Verdon, the 9-hole course (par 27) of Courchevel welcomes tourists and hosts regular competitions. The club has a driving range, putting green and training bunkers for you to warm up on before beginning your game. Whilst playing you can enjoy the spectacular views across the fairways, or take the opportunity to brush up your skills with some private tuition with resident pro Greg Ruffier.



Contact us for advice or to arrange a visit



## Viewing

We have an intimate knowledge of all our resorts and whether you are travelling alone, with a partner, or bringing the whole family we can suggest the perfect place to stay. We can also recommend excellent local restaurants and even let you know if there are any exciting events happening in the vicinity to ensure you have an informative and pleasurable trip. Simply let us know which dates you have in mind and we will arrange for one of our representatives to meet you and show you around. All you need to do is to book your flight and rent a hire car and we can help organise everything else for you.

There are many cheap flights to Geneva with EasyJet [www.easyjet.com](http://www.easyjet.com) and a good service to Chambéry in winter [www.snowjet.co.uk](http://www.snowjet.co.uk) and [www.flybe.com](http://www.flybe.com) It is possible to make a day trip but if you would like to stay overnight, we can recommend good hotels in the area.

### Disclaimer

Whilst we make every attempt to ensure the accuracy and reliability of the information contained in all brochures and the company website, the company, its employees and agents will not be responsible for any loss, however arising, from the use of, or reliance on this information. The sales deed prepared by the local Notary will contain all the terms of the sale and no warranty or representation made by an other person which is not specifically included in that deed of sale is legally enforceable.

© **Investors in Property 2011**

## Company Profile

Investors in Property specialise in the sale of ski chalets and apartments in Switzerland, Austria, France & Italy. We have over 20 years experience and an unrivalled knowledge of well established and up and coming ski resorts. We will provide expert advice and professional guidance through every step of your purchase. If you have any questions or need general advice please do not hesitate to contact us.

## Contact

Simon Malster – Investors in Property

Tel: +44 (0)20 8905 5511

[simon@investorsinproperty.com](mailto:simon@investorsinproperty.com)



[www.investorsinproperty.com](http://www.investorsinproperty.com)

SKI PROPERTY SPECIALISTS SINCE 1986